

TL NewsWire™

Hot new products for lawyers and law office administrators.

LawBase Offers Comprehensive Case and Matter Management With Best-Of-Breed Integrations

By Neil J. Squillante

January 13, 2016

Lawyers tend to specialize as this gives you deep insight into a given area of law and thus a competitive advantage. Your case and matter management software should go just as deep so that it can track every aspect of your work, and keep your team informed and on the right track.

LawBase 12.5 ... in One Sentence

Launching this week, LawBase 12.5 is a popular case and matter management system known for its depth and integrations, the newest of which involves automated court rules.

The Killer Feature

LawBase CEO Phil Homburger describes LawBase as “adaptable and configurable.” The distinction lies in LawBase’s architecture — a sandboxed database that holds all your firm’s data and each user’s settings.

Instead of adding just a few custom fields here and there, LawBase enables you to design automated workflows that interact with other products and online services when necessary. Think of it as a hub for all the work performed by your firm.

LawBase includes a number of templates for practice areas such as general practice, insurance defense, mortgage refinancing, mass tort, personal injury, government agencies, corporate legal departments, etc. You can work with the company to build a custom implementation if needed.

“We have provided case and matter management software to

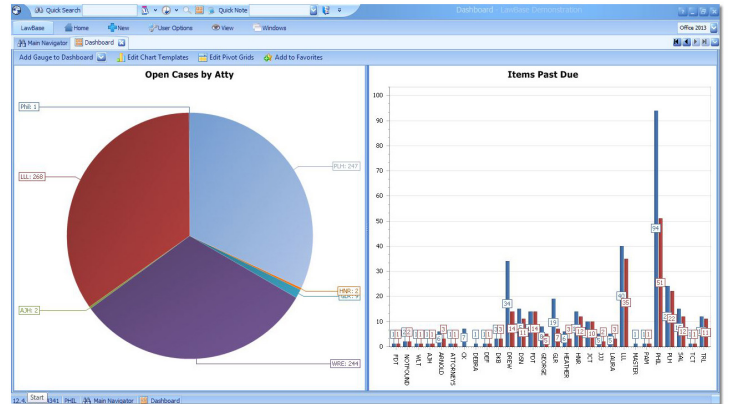
the legal industry for more than three decades,” Homburger tells us. “In this time, we have found that the flexibility offered in LawBase adds tremendous value to our clients. This flexibility extends to the integration with a myriad of other products which has proven the benefit of our best-of-breed approach.”

Other Notable Features

Contacts, calendars, matters, and whatever other data types you track each reside in a Cabinet. Each Cabinet contains nested Smartfolders that contain all the data. The “smart” in Smartfolders refers to tools such as searching and filtering, user access controls, notifications, and statuses. Cross-referencing enables you to access the contents of one Smartfolder from another.

Workflows and integrations also reside in Smartfolders. The newest integration is with Calendar Rules. Just about any other software product can integrate with LawBase according to Homburger. Popular integrations include Microsoft Outlook, iTimeKeep, Carpe Diem, HotDocs, iManage, NetDocuments, Tabs3, Juris, Timeslips, and Worldox.

As an example, a LawBase workflow could generate a Word document using a HotDocs questionnaire,



store the final version in Worldox, email it through Outlook to a client, efile it with an agency, and post a time entry to Tabs3 — all without leaving LawBase.

What Else Should You Know?

The Report Generator within LawBase enables you to create every imaginable report without the need for a separate product. You can host LawBase in your firm or through virtual desktop providers such as LegalWorkspace, mindSHIFT, and Uptime Legal Systems.



Phil Homburger

4155 E. Jewell Ave.

Suite 600

Denver, CO 80222

(720) 536-3213 (Direct)

(303) 522-3759 (Cell)

phil.homburger@lawbase.com

www.lawbase.com

About TL NewsWire

So many products, so little time. Each issue of TL NewsWire reports on and links to several hot new products and services of interest to law firms and legal departments. The innovative structure of TL NewsWire’s articles, which feature sections such as “In One Sentence” and “The Killer Feature,” enable lawyers and law office administrators like you to quickly understand the function of each product, and zero in on its most important attributes. TL NewsWire is free. Learn more at technolawyer.com/tlnewswire.